

Production plants





PRODUCTION PLANTS

- more than 40 years of experience in the field of precast concrete
 - production license of the 3 systems
 - any productive need can be covered
 - transfer of technology of production
 - total integrated design of the production plant
 - turnkey delivery of the plant
 - single plant productivity from a minimum of 160 m²/day up to a maximum of 2000 m²/day for the Domus Dry system
 - single production shift at start, double shift at full rate production
- With more than 40 years of experience in the field of precast concrete, DLC consulting has developed an advanced, innovative and economical offer referred to the field of precast concrete, releasing the license of production of the 3 systems:
- Domus Dry for residential
 - Pandal for tertiary
 - Ondal 12 for industrial
- Through the combined use of the 3 systems, it is possible to cover any kind of productive need and to carry out high quality complex interventions of integrated urbanisation in short time.
- The design of the production plant is flexible and may involve the production of a single system or of a combination of them.
- The technological features of these systems require advanced equipment and machineries of high precision and efficiency. DLC consulting developed the productive layout and offers the transfer of technology of production. The following documents are provided:
- Functional layout
 - Design of moulds and production lines
 - Design of the storage areas and of the areas supporting the production
 - Design of the precast plant structure and cladding
 - Simulation of the cycle of daily production
- The factory may be thus turn-key sold. The experts of DLC consulting may draft a preliminary feasibility plan with the derivation of investment, cost of production and cash-flow.
- As an example, the application of the Domus Dry system for residential buildings generally requires a realisation time from a minimum of 6 months for a bridge-factory (160 m²/day) up to a maximum of 12 months for production rates of 10 standard apartments per day (800 m²/day) or more, extendible with a carousel system up to a maximum of 2000 m²/day.
- The production plant is built under the supervision of highly experienced operators in the field of precast concrete production. They operate at least up to start of the production.
- The initial production is generally carried out starting with a single shift managed by specialised personnel that instructs the local manpower. Gradually, the production may increase up to a double shift at full rate.

- plant management

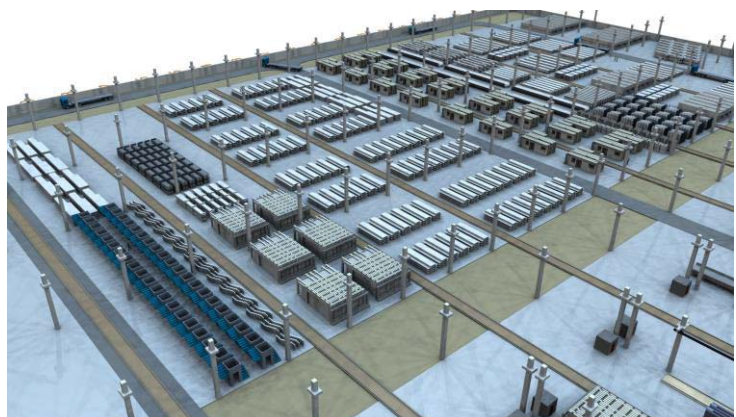
Our personnel is also available to take the direction and the production management of the plant for 5 years, after which these tasks are transferred to local instructed operators.

- services of technical office for design, direction of works, quality check and static stability check

DLC consulting also offers to work as internal technical office of the plant, taking care of the integrated design, of the direction of works, of the quality control and of the static inspections, using the BIM approach to provide speed, safety and quality.

- continuative consulting aimed at the enhancement of the production

DLC consulting can ensure a continuative consultancy in phase of acquisition of orders and in case of arising problematics, also setting up a program of scientific research and technical development aimed at the enhancement of the production.





- production plants: examples

Manini – Aprilia (LT)

- General plan



- Central production nave



- steel cage assemblage



- production plants: examples

Eurobeton – La cote-Saint André - France

- Plant view



- Panel handling



- External storage





OUR REFERENCES



PRODUCTION PLANTS – DESIGN AND RENOVATION 1974-2015

NOME	LOCALITA'	DESIGN	RENOVATION
SACIE	NOVARA		X
CANOVA	PIACENZA	X	
MANINI	PERUGIA	X	
MASCAZZINI	MILANO	X	
ITALCASE	BRESCIA	X	
EDILIAS	TORINO		X
CIVIDINI	BERGAMO		X
SPEI	BARI		X
PREFABBRICATI ABRUZZESI	PESCARA	X	
PAVIRANI	BOLOGNA	X	
PRAINSA	ZARAGOZA (SPAIN)	X	
PREYPRESA	MADRID (SPAIN)	X	
IPRES	VERONA		X
MEPP	PARMA		X
IPE	SALERNO		X
TRUZZI	MANTOVA		X
EDILGORI	VITERBO		X
GIANNINI COSTRUZIONI	SIENA	X	
LONARDI	VERONA		X
MORETTI	BRESCIA		X
PI.ESSE.GI	ASTI	X	
SISPRE	VARESE		X
PRECOVEN	CORO (VENEZUELA)	X	
IMEC	NAPOLI		X
RABIAH & NASSAR	RIJADH (SAUDI ARABIA)	X	
M.C.	VARESE	X	
NORD PREFABBRICATI	ALESSANDRIA		X
PERUZZI	MILANO		X
PERUZZI	SIENA		X
C.P.C.	PALERMO		X
ASTORI	MILANO		X
MURO MASTER	BILBAO (SPAIN)		X
MANINI LAZIO	ROMA	X	
M.C.	VARESE		X
M.C. COMPONENTI	VARESE	X	
M.C.	NOVARA	X	
AQUILA PREFABBRICATI	CASERTA	X	
EUROBETON	LYON (FRANCE)	X	
EUROBETON	PARIS (FRANCE)		X
SICEP	CATANIA	X	X
BASSO	TREVISO	X	X
EMA	MILANO		X
YUANDA	SHENYANG (CHINA)	X	
PREMIERE	MOSCOW (RUSSIA)	X	

NOTE: PLANTS ARE LISTED IN ASCENDING CHRONOLOGICAL ORDER

more details? quotations?

info@dlc-consulting.it

